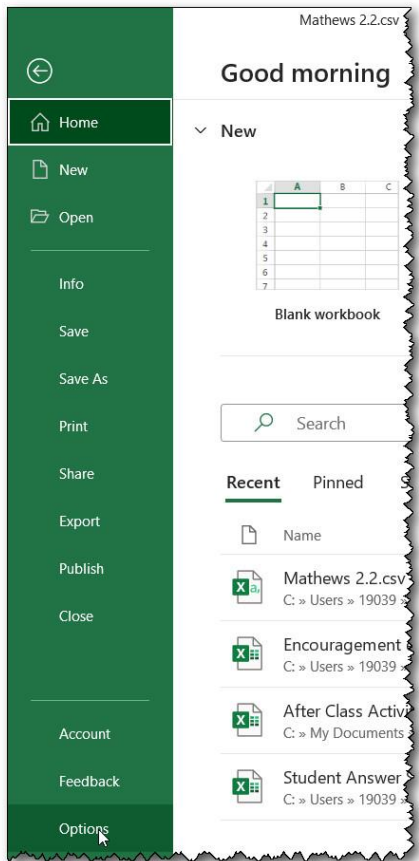
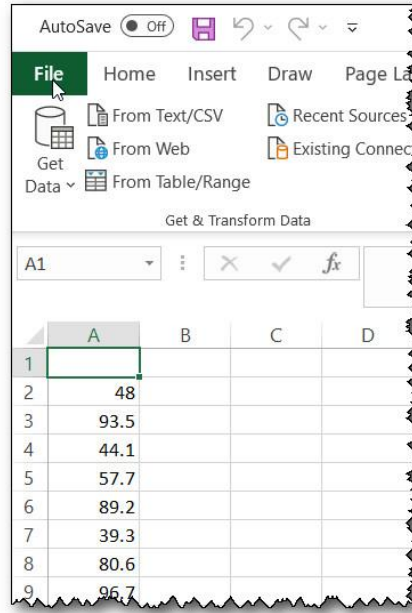


Histograms in Excel

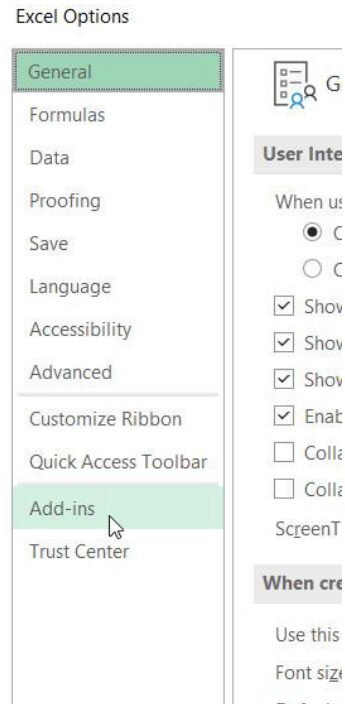
You need to access an Excel Add-In.

Click on File



Then on Options

Next on Add-ins



Histograms in Excel

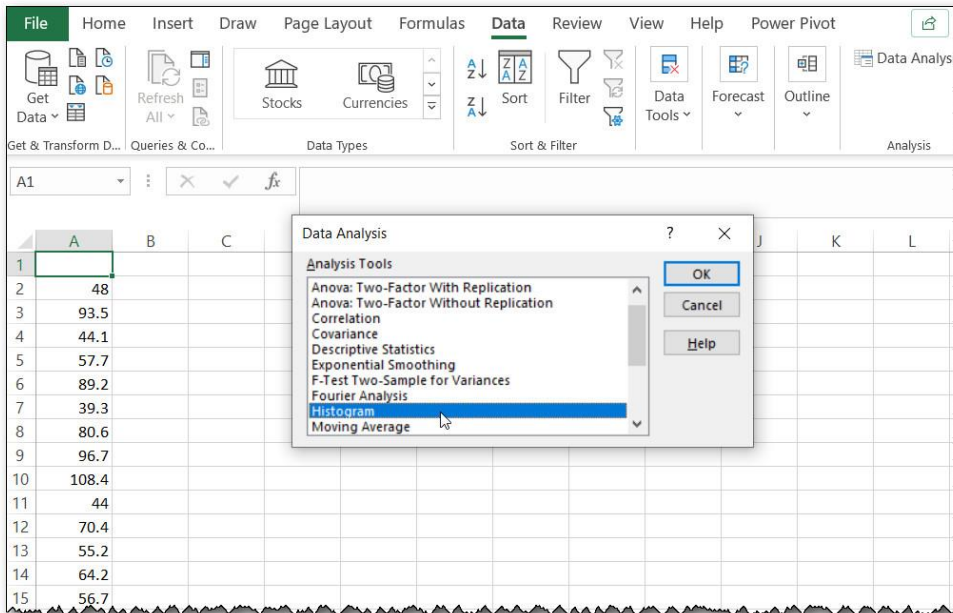
This is problem 12 from exercise 2.2

The data from the problem has been loaded into the spreadsheet.

The problem specified a class width of 15 and a lower limit of 30.

Set up the class limits. You will use the upper limits of the class for the Histogram.

	A	B	C	D	E	F	G	H	I
1									
2		48			Bins				
3		93.5			30				
4		44.1			45				
5		57.7			60				
6		89.2			75				
7		39.3			90				
8		80.6			105				
9		96.7			120				
10		108.4			135				
11		44			150				
12		70.4							
13		55.2							
14		64.2							
15		56.7							
16		74.9							
17		47.5							
18		73.6							
19		65							
20		86.2							
21		60.1							

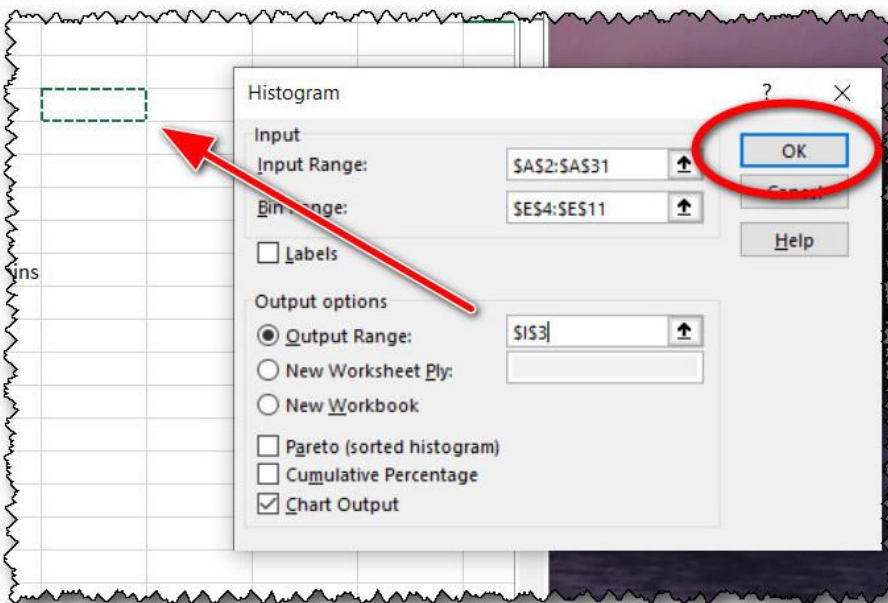
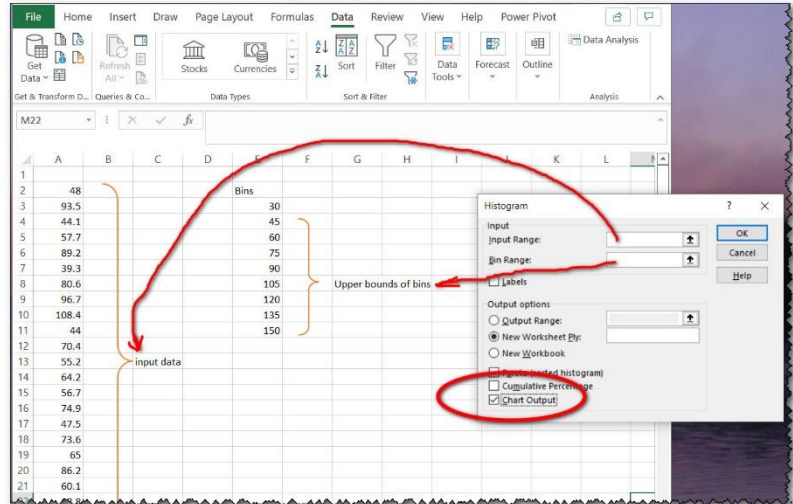


When you click on the Data Analysis tool, you get the options shown here. You will choose the Histogram.

Histograms in Excel

Specify the ranges for the input and for the bins. Note again, use the upper class limits.

Choose the chart option to get the histogram graph.



Specify the cell for where the output of the frequencies will appear.

Then click the OK

And, automatically, the frequencies and the graph are generated.

