

Inserting A Video in the Bible Study PowerPoint

Dr. Steve Armstrong

The first time I tried to use the introductory video, I had a problem with the video showing up only my computer screen, and not on the projected PowerPoint slide.

I had to stop it and drag it to the secondary monitor, a large screen TV on the wall. This was awkward and broke the flow of the start of the lesson.



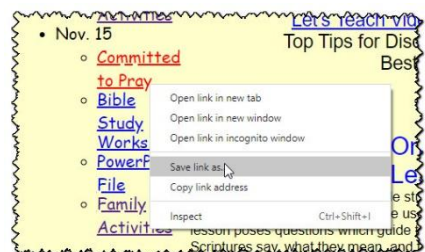
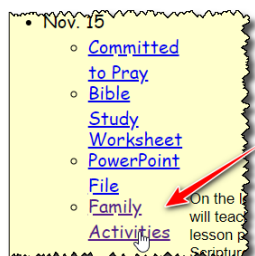
It is possible to insert the video into the PowerPoint that is posted each week. However, it

Name	Date modified	Type	Size
Committed to Pray - 11.15.2020.pptx	10/30/2020 10:19 AM	Microsoft PowerP..	2,987 KB
Committed to Pray (with inserted video) ...	11/23/2020 11:34 AM	Microsoft PowerP..	249,248 KB
Narration Inserting a video into ppt.docx	11/23/2020 11:24 AM	Microsoft Word D..	22 KB
s2 LU screen.jpg	11/23/2020 11:28 AM	IrfanView JPG File	140 KB
s2 screen with video link.jpg	11/23/2020 11:27 AM	IrfanView JPG File	116 KB
s4 insert - video.wmv	11/23/2020 11:32 AM	WMV File	520 KB

significantly increases the size of the PowerPoint file. This makes it unwieldy for me to upload or for you to download, especially if you might choose not to use it for a particular week.

This document describes how you can work around this problem by downloading the PowerPoint lesson and the video *separately* to your *own* computer. **Then** you can insert the video into *your copy* of the PowerPoint lesson.

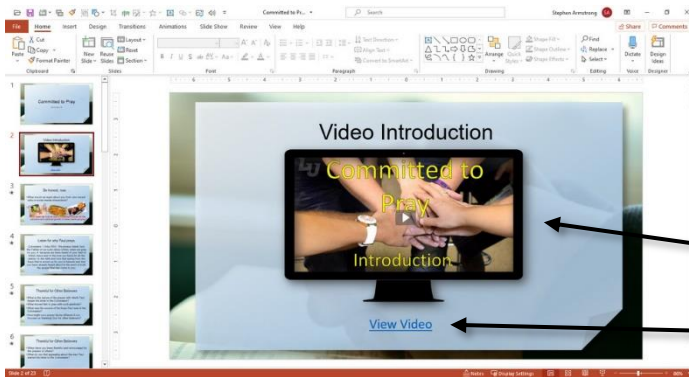
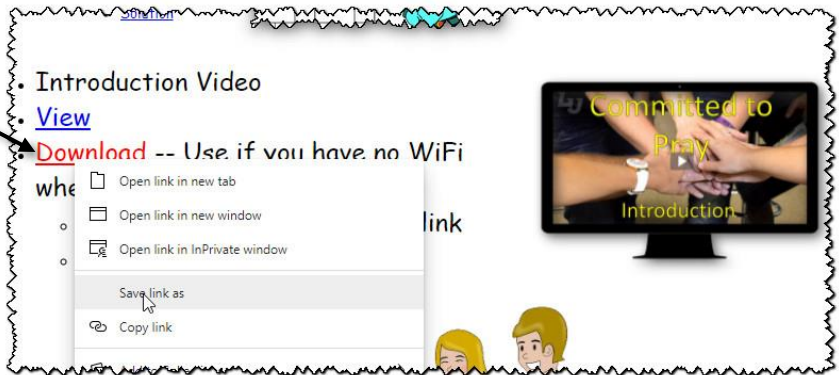
First download the PowerPoint lesson as you usually do, then go to the **Family Activities** page for the lesson and find the links to the video.



Inserting A Video in the Bible Study PowerPoint

Dr. Steve Armstrong

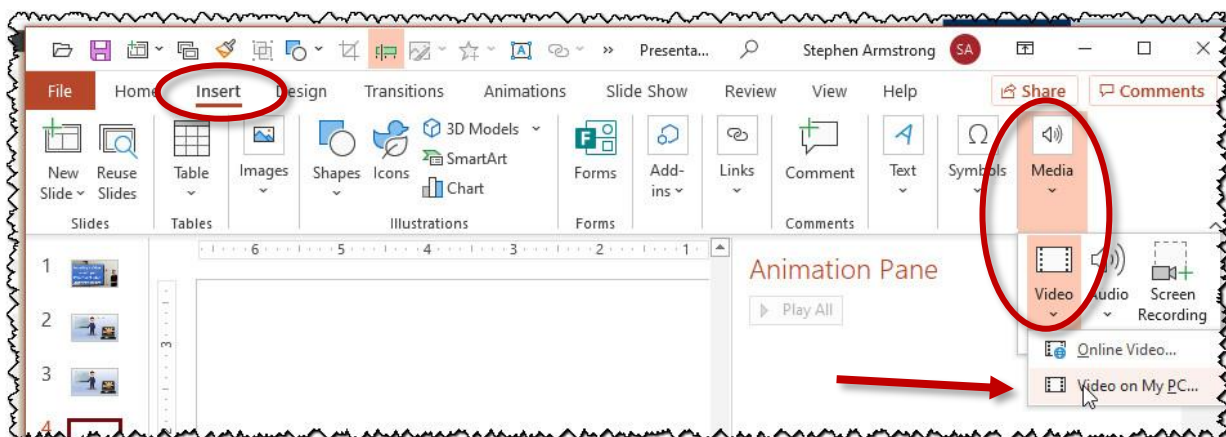
You should see the “View” link and the Download link – use this one by following the instruction to Right click on the link, choose “Save Link As”. Specify the same folder as where you saved the PowerPoint file



Now load the PowerPoint file into the editor and go to the slide which has the View version of the video – this is usually the second slide of the lesson.

Delete the picture of the monitor with the opening screen of the video and the text box with the link “View Video”

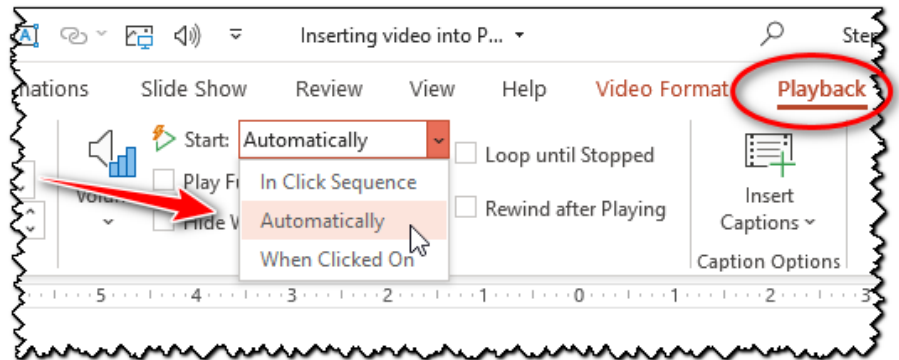
At the top of the PowerPoint editor, choose Insert, then Video. Choose the video file you have downloaded – note, this insertion may take a few extra seconds.



Inserting A Video in the Bible Study PowerPoint

Dr. Steve Armstrong

Specify the video to play automatically. It's probably a good idea to save the file with the video now inserted.



You may want to amend the next screen with the introductory question and the pictures which are there to stimulate possible answers to that question. You can delete the question and the pictures, and have it show only what the lesson plans call "The Point". These will be in red.

Now when you advance from the title slide, the video should begin playing on the same screen as where the PowerPoint is being projected. No awkward halting and switching applications. When it's done, go on to the next slide.



Once you've done this sequence a few times, you'll be a PowerPoint expert! May God bless your teaching ministry.